



MISTO

**NATURALIS**  
COLLECTIONS





## NATURALIS COLLECTIONS

WHETHER YOU ARE A TRUE BELIEVER IN THE GREEN MOVEMENT OR YOU'RE JUST PASSIONATE IN BRINGING THE BEAUTY OF NATURE INTO YOUR HOME, THERE'S NO DENYING THE APPEAL OF NATURAL MATERIALS IN INTERIOR DESIGN.

NATURALIS, A BEAUTIFUL COLLECTION OF PORCELAIN TILE DESIGNS INSPIRED BY NATURAL STONE. GORGEOUS AND EXTREMELY DURABLE, STONE-LOOK TILE IS DEFINITELY A SMART CHOICE FOR FLOORS AND WALLS, AND VERY EASY TO TAKE CARE OF AS WELL. WITH ITS FINE VARIETY OF MODERN DESIGNS AND SIZES, NATURALIS IS SURE TO ADD AN ELEGANT TOUCH TO ANY DÉCOR SCHEME.

BY WIFI CERAMICS



WHETHER YOUR INTERIOR IS TRADITIONAL OR CONTEMPORARY, NATURAL STONE SURFACES CAN ENHANCE ANY HOME WITH THEIR WARMTH AND QUALITY. COMPOSED LARGELY OF MINERALS CALCITE AND ARAGONITE, LIMESTONE IS TRADITIONALLY USED ON FLOORS OF GREAT KITCHENS AND HALLWAYS FOR ITS STRENGTH AND UNDERSTATED ELEGANCE.

INTRODUCING MISTO, AN EXCLUSIVE PORCELAIN SERIES THAT SHOWCASES THE ELEGANCE AND QUIET BEAUTY OF LIMESTONE. WITH A SUBTLE DESIGN THAT IS BOTH MODERN YET CHARMINGLY RUSTIC, MISTO EVOKES A WONDERFUL AMBIENCE TO ANY SPACE, WHILE INTRODUCING A SOOTHING VISUAL INTEREST WITHOUT SACRIFICING THE OVERALL SERENITY.

BY WIFI CERAMICS

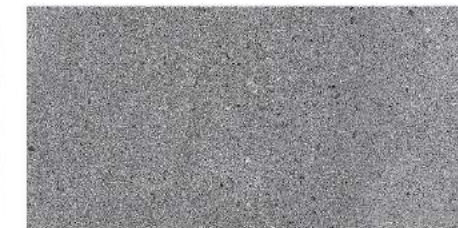
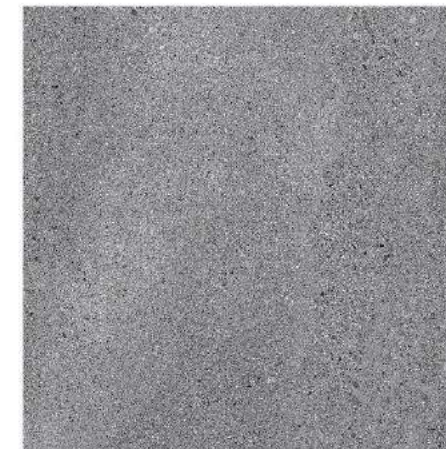


■ 30x60  
■ 24 RANDOMNESS



■ 30x30  
■ 48 RANDOMNESS

**BEIGE**  
**MIT602**  
■ NATURAL SURFACE

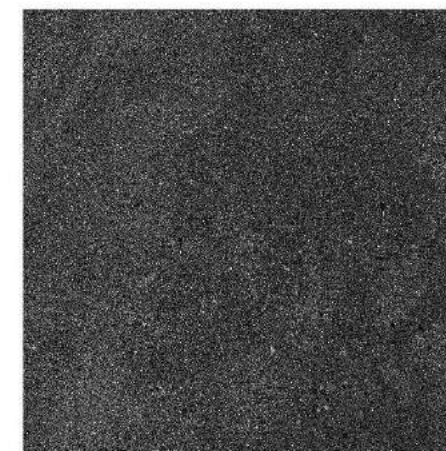


■ 30x60  
■ 24 RANDOMNESS

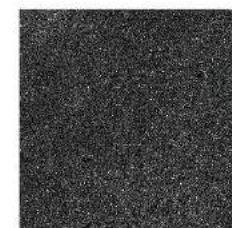


■ 30x30  
■ 48 RANDOMNESS

**CINDER**  
**MIT603**  
■ NATURAL SURFACE



■ 30x60  
■ 24 RANDOMNESS



■ 30x30  
■ 48 RANDOMNESS

**COAL**  
**MIT608**  
■ NATURAL SURFACE





**NATURALIS**  
COLLECTIONS

## **BEIGE** MIT602

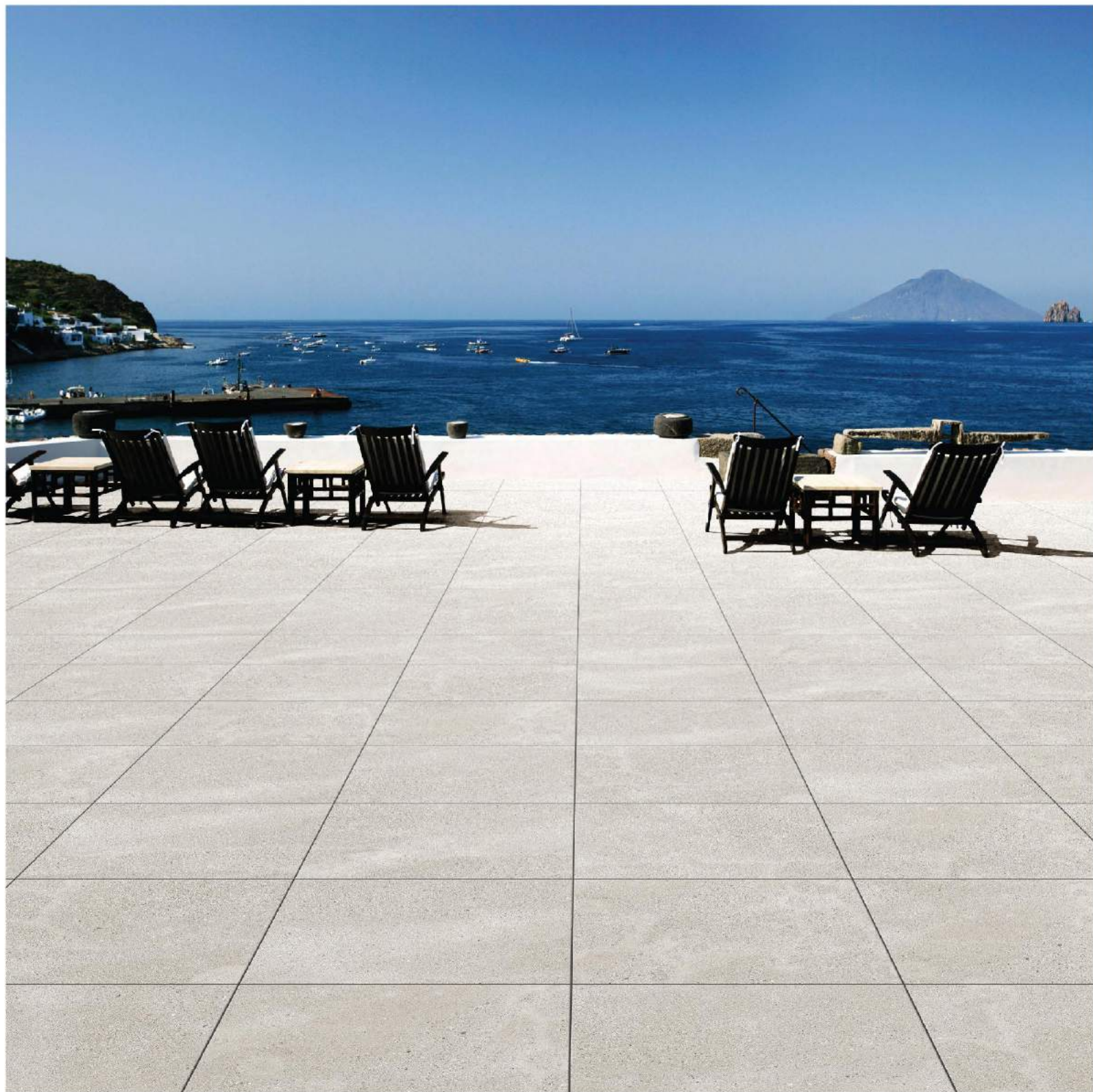
■ NATURAL SURFACE

Warm yet quite contemporary –  
Beige creates a soft, calming look  
and makes you feel like you're  
walking into a room made of  
cashmere. Pair it with layers of  
cream and misty grey to generate  
a restful oasis.

- 60x60 | 12 RANDOMNESS
- 60x30 | 24 RANDOMNESS
- 30x30 | 48 RANDOMNESS







**NATURALIS**  
COLLECTIONS

## BEIGE MIT602

■ NATURAL SURFACE

Warm yet quite contemporary – Beige creates a soft, calming look and makes you feel like you're walking into a room made of cashmere. Pair it with layers of cream and misty grey to generate a restful oasis.

- 60x60 | 12 RANDOMNESS
- 60x30 | 24 RANDOMNESS
- 30x30 | 48 RANDOMNESS







## CINDER MIT603

■ NATURAL SURFACE

With a colour so serene,  
Cinder is a great pick to increase  
the value of your home with a material  
that is sophisticated, easy to maintain  
and durable.

- 60x60 | 12 RANDOMNESS
- 60x30 | 24 RANDOMNESS
- 30x30 | 48 RANDOMNESS







**NATURALIS**  
COLLECTIONS

## **CINDER** MIT603

■ NATURAL SURFACE

With a colour so serene,  
Cinder is a great pick to increase  
the value of your home with a material  
that is sophisticated, easy to maintain  
and durable.

- 60x60 | 12 RANDOMNESS
- 60x30 | 24 RANDOMNESS
- 30x30 | 48 RANDOMNESS





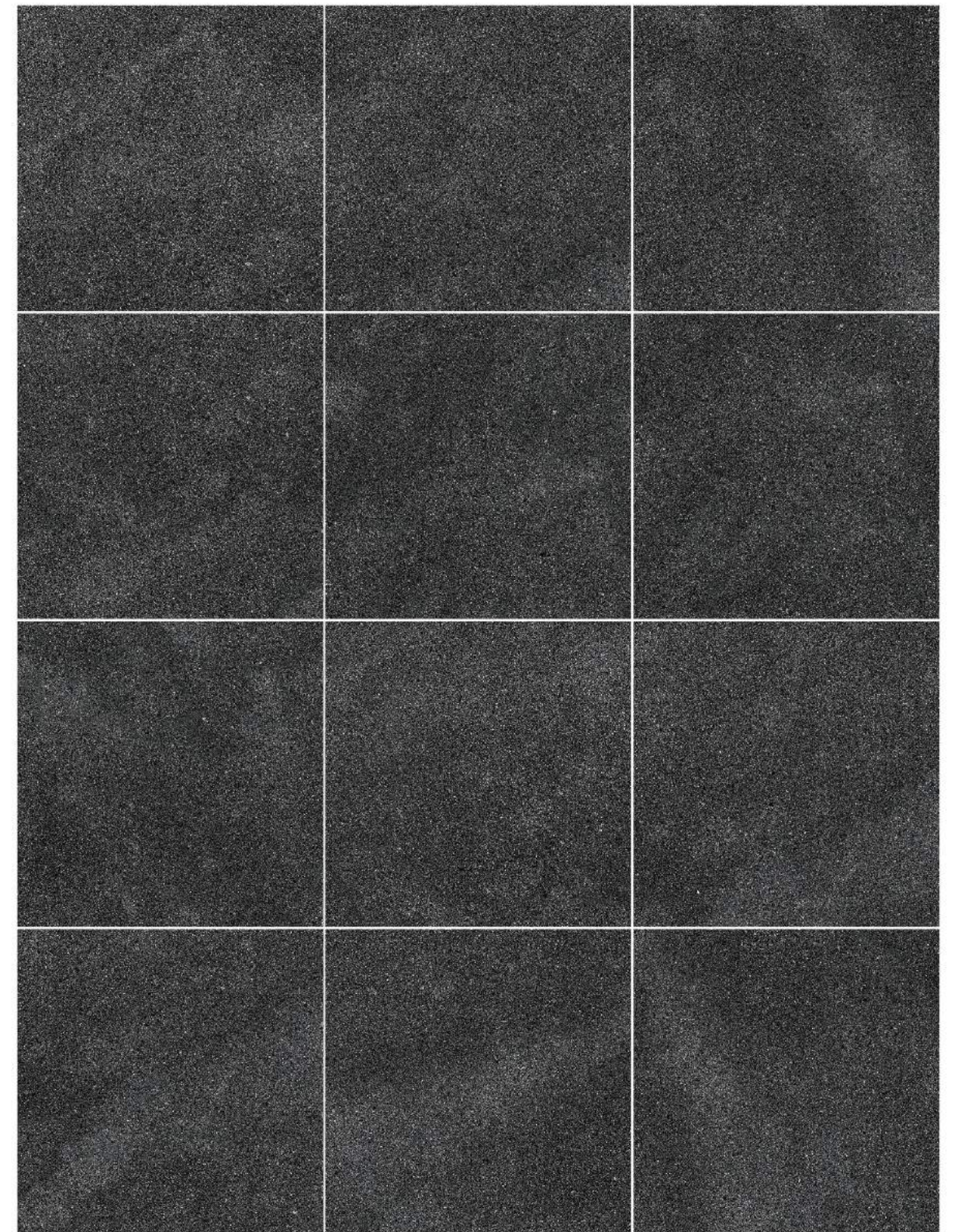


## COAL MIT608

■ NATURAL SURFACE

Rich in detail and colour, Coal is designed to give your space the sophistication, drama and style of luxurious stone with the durability and versatility of porcelain tile.

- 60x60 | 12 RANDOMNESS
- 60x30 | 24 RANDOMNESS
- 30x30 | 48 RANDOMNESS







**NATURALIS**  
COLLECTIONS

## COAL MIT608

■ NATURAL SURFACE

Rich in detail and colour, Coal is designed to give your space the sophistication, drama and style of luxurious stone with the durability and versatility of porcelain tile.

- 60x60 | 12 RANDOMNESS
- 60x30 | 24 RANDOMNESS
- 30x30 | 48 RANDOMNESS





INSTALLATION TIPS

- 01
- Inspect all product prior to installation for any visible defects or unacceptable colour/shade variation. Claims are not accepted after installation.
- 02
- A 1/4” square-notched trowel is suggested for applying the thin-set.
- 03
- Before grouting, allow the mortar base to dry for 24 to 48 hours.
- 04
- The tiles can be cleaned with clear water and/or a neutral liquid cleaner. Apply the cleaning solution to the properly installed tile using a cloth mop or non-abrasive towel. Follow the application with a clear water rinse and wipe dry to prevent film formation.
- 05
- Sealing the tile is not recommended, and acid cleaning the tile may result in substantial harm to the product; therefore if either of these applications are performed it will specifically void the warranty.
- 06
- INSTALLATION OF RECTANGULAR TILES:  
Staggered space should be kept within 10cm to 15cm  
(For 10cm X 60cm, 15cm X 60cm, 20cm X60cm, 30cm X 60cm, and 47cm X120cm rectangular tiles)  
to compensate for the warpage of rectangular tiles.



TECHINICAL SPECIFICATIONS

DESCRIPTION	STANDARD TEST	MEASUREMENT UNIT	ISO STANDARD REQUIREMENT	WIFI
Length & Width	ISO 10545 - 2	mm	± 0.5% Max	± 0.5% Max
Thickness	ISO 10545 - 2	mm	± 5.0% Max	± 5.0% Max
Sides Straightness	ISO 10545 - 2	mm	± 0.5% Max	± 0.5% Max
Rectangularity	ISO 10545 - 2	mm	± 0.6% Max	± 0.6% Max
Flatness: a) Centre Curvature b) Edge Curvature c) Warpage	ISO 10545 - 2 ISO 10545 - 2 ISO 10545 - 2	mm mm mm	± 0.5% Max ± 0.5% Max ± 0.5% Max	± 0.5% Max ± 0.5% Max ± 0.5% Max
Surface Quality	ISO 10545 - 2	One major area of tiles	≥ 95% free from visible defect	≥ 95% free from visible defect
Water Absorption	ISO 10545 - 3	Mass	≤ 0.5%	≤ 0.5%
Modulus of Rupture	ISO 10545 - 4	N/mm2	≥ 35N/mm2	≥ 35N/mm2
Deep Abrasion	ISO 10545 - 6	mm3	≤ 175 mm3	≤ 175 mm3
Surface Abrasion PEI ASTM C1027	ISO 10545 - 7	Visual Check	Manuf. to state Abrasion Class, Cycle Passed	Manuf. to state Abrasion Class, Cycle Passed
Crazing Test	ISO 10545 - 11	Visual Check	Not Applicable for porcelain tiles	Not Applicable for porcelain tiles
Frost Resistance	ISO 10545 - 12	Visual Check	Required	Required
Chemical Resistance (Low Cons.)	ISO 10545 - 13	Visual Check	Manuf. to state	Manuf. to state
Chemical Resistance (Household/Swimming Pool)	ISO 10545 - 13	Visual Check	Max Visible Change On Out Side	Max Visible Change On Out Side
Stain Resistance	ISO 10545 - 14	Visual Check	Class 3 Min	Class 3 Min
Coefficient of Friction	ISO 10545 - 17	Manuf. to state	Manuf. to state	Manuf. to state

Each different tiles series is produced to meet different performance requirements. For specific product technical performance, please request from **WIFI** sales team or their agent or distributor.

Colour Variations: Since the colour reproduction in this printed piece will vary from the actual tile colours, final selection should be made from tile samples. Colour, shade and glaze variations may exist due to the inherent characteristics of porcelain tile.



**WiFi** CERAMICS

No. 13-17, Building A16,  
International Ceramics and Sanitary Ware City,  
Jihua West Road, Nanzhuang Town,  
Chancheng District, Foshan City  
Guangdong Province, China.

+86-757-8252 5001

[info@wificeramics.com](mailto:info@wificeramics.com)

[www.wificeramics.com](http://www.wificeramics.com)